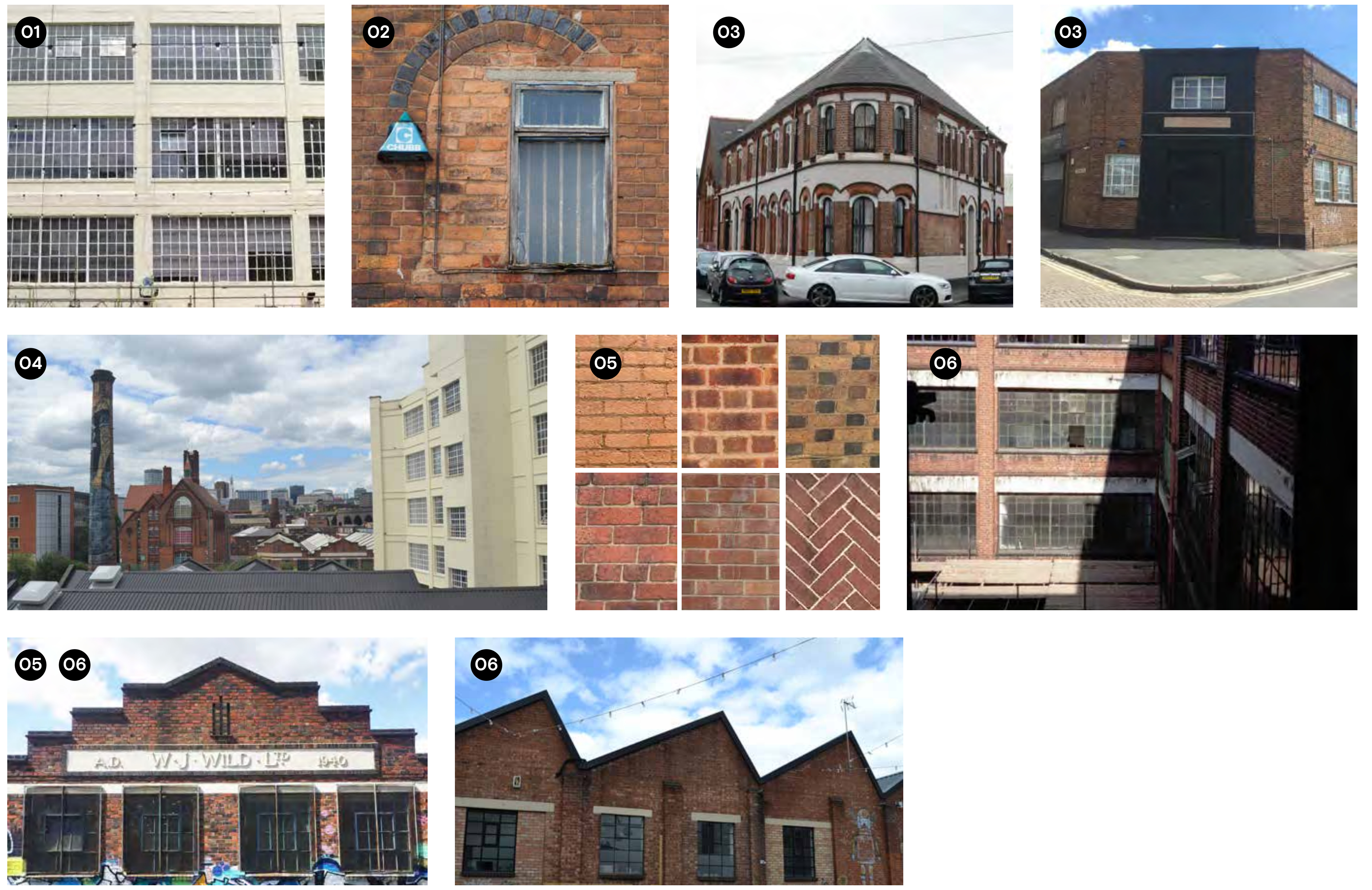


ARCHITECTURAL PRINCIPLES

LEARN FROM THE ARCHITECTURAL LANGUAGE OF DIGBETH

- 01 Gridded façades with regular distribution of windows
- 02 Moments of imperfection
- 03 Distinctive corners
- 04 Aggregation of buildings forms
- 05 Predominant use of red and brown brick
- 06 Expressed architectural elements such as lintels, parapets and signage
- 07 Articulated and varied roofline



FLOODGATE STREET - EAST ELEVATION



#ONLY IN DIGBETH #ONLY IN DIGBETH #ONLY IN DIGBETH